



## CORPORATE PROFILE | 2025



# **DRIVELINE**

SERVICES AUSTRALIA

## Our Profile

**Driveline Services Australia Pty Ltd (Driveline)** is the country's leading independently owned and operated underbody and power transmission specialist. In addition to manufacture, export, import, supply and distribution of a comprehensive range of aftermarket underbody and power transmission components, Driveline also provides workshop and rebuild services for drive and driven assemblies seen in mining, light fleets, four wheel drive, passenger, performance, truck, bus, defence, agricultural, industrial, and marine vehicles.

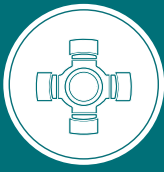
As the underbody and power transmission specialists, Driveline relies on a proven combination of proactive market communication and innovative, solution focused research, backed by a wealth of international manufacturing, importing and logistics experience, to deliver timely aftermarket solutions to its clients globally.

### **Key facts:**

- Established in Brisbane in 1982
- 12 branches and over 100 employees nationally
- Comprehensive new parts and services inventory
- Servicing the wholesale, trade and retail markets of Australia and the world



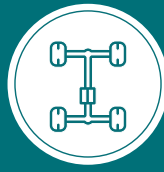
**Complete  
Drive Shafts**



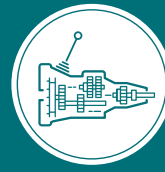
**Driveline  
Components**



**DURASHOCK  
4x4 Suspension**



**4x4  
Components**



**Axles and  
Transmissions**



**Workshop  
Services**



**Industrial  
Balancing**

***FOR WHATEVER IS DRIVING YOU.***

## Our Mission

**To be the underbody and power transmission specialists. Your one-stop shop for powertrain parts and services for all drivetrain assemblies.**

- |                        |  |
|------------------------|--|
| ✓ <b>Driveshafts</b>   | ✓ <b>Suspension Solutions</b>                |
| ✓ <b>Diffs</b>         | ✓ <b>CV Shafts and Joints Power Steering</b> |
| ✓ <b>Axles</b>         | ✓ <b>Componentry</b>                         |
| ✓ <b>Transmissions</b> | ✓ <b>Gearboxes</b>                           |

### **Our goals:**

- We strive to have the right parts at the right price on shelf at all times
- We develop and strengthen new and existing customer and supplier relationships by being responsive to their needs
- We support the community that supports us
- We want to be recognised as underbody and power transmission specialists





Head Office, Brisbane South

## Driveline Branches

The **Driveline Services Australia** national footprint includes an ever expanding network of branches including warehouses, workshops and fully equipped rebuild centres.



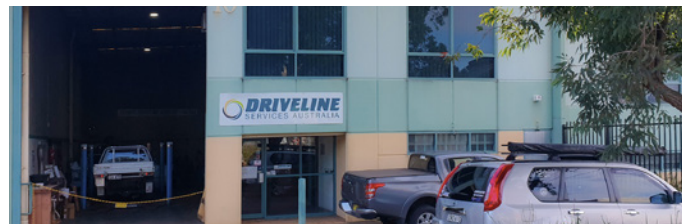
Brendale, Brisbane North



Townsville



Mackay



Sydney



Newcastle

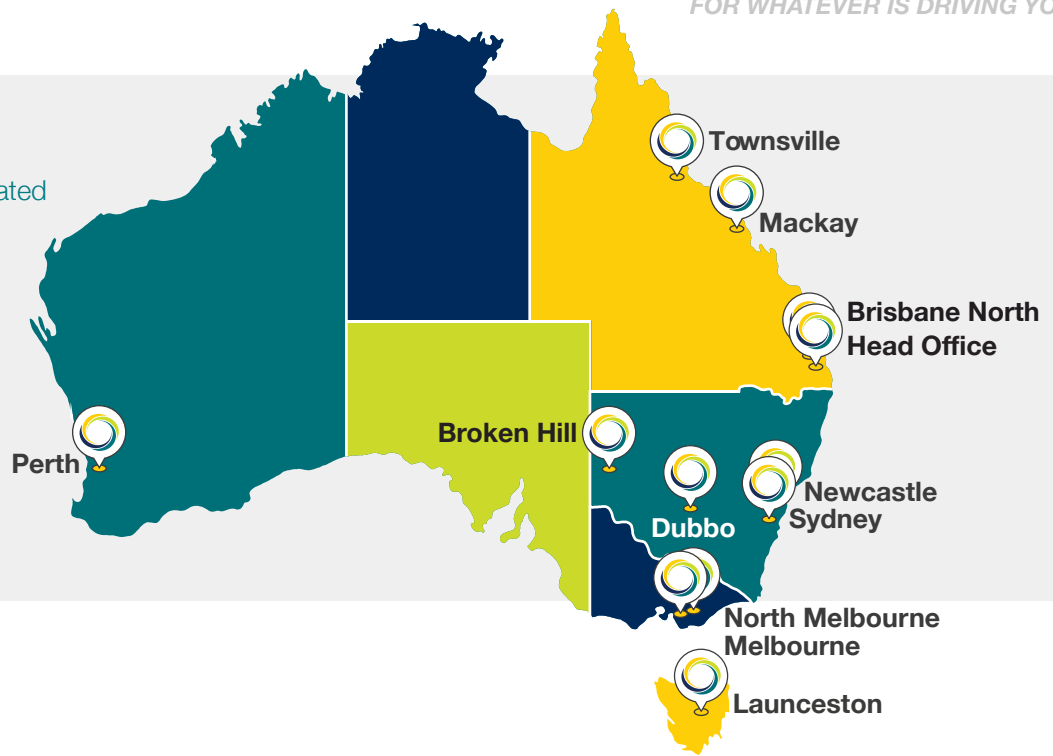


Dubbo





Australian Family  
Owned and Operated



Broken Hill



North Melbourne



Bayswater North, Melbourne



Tasmania



Perth



## Your Partner In Mining

**Driveline** manufactures and supplies parts, technical support and components to mine vehicle manufacturers and direct to the aftermarket. Comprehensive cross-referenced cataloguing, together with strong international relationships with the world's leading power transmission manufacturers helps Driveline provide parts, technical support and rebuild/repair solutions for the gamut of machines and components on-site.

### Vehicles we service:

- |                           |                                   |                  |
|---------------------------|-----------------------------------|------------------|
| ▶ Haul Trucks             | ▶ Shotcreters, Spraymecs and Agis | ▶ Service Trucks |
| ▶ Articulated Haul Trucks | ▶ Driftrunners                    | ▶ Road Transport |
| ▶ Wheel Loaders           | ▶ Graders                         | ▶ Forklifts      |
| ▶ Underground Loaders     | ▶ Track and Wheel Dozers          | ▶ Ore Trains     |
| ▶ Shield Haulers          | ▶ Tool Carriers                   | ▶ Track Machines |
| ▶ Draglines               | ▶ Telehandlers and EWP's          | ▶ Reach Stackers |
| ▶ Surface Drills          | ▶ Light Vehicle Fleets            | ▶ Big Trucks     |
| ▶ Underground Drills      | ▶ Light Trucks                    |                  |





## Component Inventory

- ▶ Driveshaft design, manufacture, modification, repair and balancing
- ▶ Axle, differential, final drive, drop box, transmission and torque converter testing and reconditioning
- ▶ Complete replacement shafts for most Caterpillar, Komatsu, Toyota and Nissan vehicles
- ▶ Off-highway, fixed plant aftermarket and Original Equipment components
- ▶ Shafts, slips, weld and spline yokes
- ▶ Lube for life universal joints
- ▶ Standard universal joints
- ▶ Heavy duty Landcruiser universal joints, spline sets and shafts
- ▶ Flanges
- ▶ Differentials
- ▶ Manual gearboxes
- ▶ Suspension
- ▶ Steering

### Brands we service:

- Eimco • Sandvik • Mitsubishi • Volvo • Elphinstone • ZF • Clark
- Hitachi • Normet • Dana • Isuzu • Liebherr • Carraro • John Deere
- Terex • Getman • Caterpillar • Haulmax • Scania • Twin Disc • Kessler + Co
- Komatsu • Toyota • Spicer • Hino



## Tailshafts

**Driveline** is the country's leading independently owned and operated tailshaft designer, manufacturer and rebuilder, providing shaft services to both the OEM and aftermarket segment for automotive, performance, four-wheel drive, road transport, defence, agricultural, marine and mining applications.

### **Our drivetrain services:**

- ▶ Standard, heavy duty/harsh environment and high performance shafts
- ▶ Passenger, performance and 4WD shafts
- ▶ Bus, truck and agricultural shafts
- ▶ Off-highway vehicle shafts and industrial fixed and stationary shafts
- ▶ Marine shafts
- ▶ Power take-off shaft
- ▶ Dynamic and industrial shaft balancing
- ▶ Driveline angular analysis





## Component Wholesale

As a major tailshaft manufacturer and importer, Driveline is a leading wholesaler of parts to the Australian and New Zealand powertrain market.

- ▶ Universal joints
- ▶ Yokes
- ▶ Centre bearings
- ▶ Flanges
- ▶ Slips
- ▶ Complete shafts
- ▶ Splines and stubs
- ▶ Standard, heavy duty and performance tubing
- ▶ Double cardan joints
- ▶ Aluminium performance parts
- ▶ Centre bearings
- ▶ CV joints
- ▶ Rubber couplings



## Axles and Power Transmissions

**Ensuring** effective power transmission from engine to wheel requires an operational understanding of many drivetrain components. Having developed an in-depth understanding of the gamut of powertrain configurations employed in most off-highway vehicles over the course of our longstanding association with the mining industry, Driveline is proud to include off-highway powertrain servicing in its services portfolio.

We are ideally positioned to offer a timely and economical repair and/or replacement service for axles, differentials, transmissions, torque converters, final drive hub reductions, and Dyno testing and/or services for most makes and models of off-highway vehicles, with many new and replacement parts already on-hand and strong relationships with several of the world's leading diff and powertrain producers.

Our extensive underground axle division and axle exchange service program keeps underground fleets on the move with fully rebuilt axle assemblies on-shelf and available on a new-for-old exchange basis. It's out with the old and in with the new in an unprecedented time, with no waiting for parts.



Authorised Dana Dealer



Kessler Trained Technicians



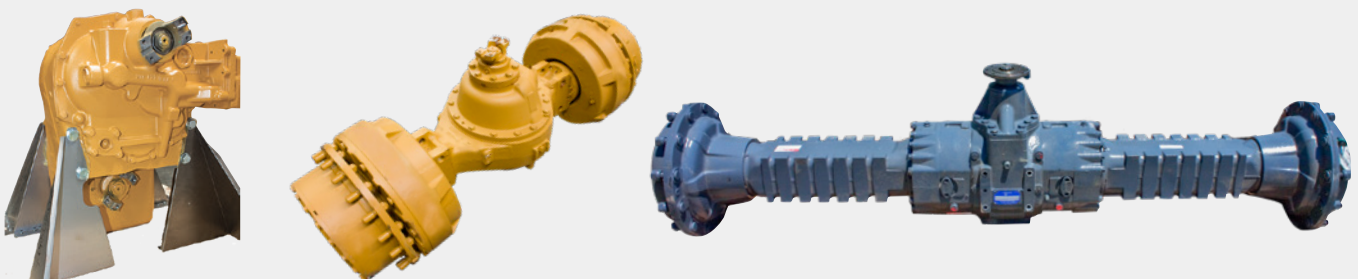




## Services and Parts

---

- ▶ Heavy Duty Transmission Dyno service for testing and fault diagnostics
- ▶ All axles finished with a riveted ID plate for easy trackin
- ▶ Rebuilds with quality components and bearings with all work completed in accordance with Dana Workshop Manuals





## 4WD Light Vehicle Fleets

**In addition** to offering a large range of OEM products, Driveline works closely with a number of Australian mines to create a range of 4WD light fleet components, specifically for mine and off-highway use. Selected for their ability to provide longer life hours than their OE equivalents, Driveline's Light Fleet inventory helps reduce costs and minimise labour.

From a single part to a complete site supply, Driveline's inventory includes a comprehensive Toyota 4WD / Light Vehicle fleet solution. Drawing on our over 40 years experience in the industry, Driveline's range includes a combination of genuine parts and proven aftermarket solutions to provide reliability, confidence and cost control.

Our industry-leading CV shafts and joints design services focus on low-cost aftermarket solutions for today's expanding fleet of independent front and rear suspension vehicles. By offering customers the option of either full or partial CV replacement, new and exchange shafts and joints, or shaft and joint restoration through an advanced CV re-manufacturing process, Driveline has a CV solution to suit nearly every fleet vehicle's make, model, and budget.





## Services and Parts

---

- ▶ Standard and heavy duty driveshaft manufacture and repair
- ▶ Steering racks, boxes and pumps
- ▶ Bearing kits
- ▶ Brake pads, discs and rotors
- ▶ Complete gearboxes and axle assemblies
- ▶ CV joints and shafts
- ▶ Suspension solutions



## Road Transport Services

**At Driveline** we pride ourselves on raising the bar for trucking services throughout Australia, with millions of dollars of driveshaft stock on-hand and ready to go, and a state-of-the-art network of thirteen branches extending the length of the eastern seaboard and west to Perth.

With the addition of Spicer / Meritor Axles and Eaton Roadranger transmissions and carriers to our already extensive inventory of on and off highway components, as well as a large and extensive range of truck brakes, drivetrain parts, pads, friction materials, suspension components, and more, you can be confident that Driveline's one-stop-shop will keep you moving when you need us the most.

- ▶ Main drive shafts
- ▶ Inter-axle shafts
- ▶ Spicer
- ▶ SPL (Dana)
- ▶ RPL (Meritor)
- ▶ Japanese specific part
- ▶ European specific part
- ▶ Universal joints
- ▶ Centre bearings
- ▶ Splined slip joints
- ▶ Flange yokes
- ▶ End yokes
- ▶ Spicer / Meritor axles
- ▶ Eaton Roadranger transmissions





## Chassis Modifications

---

As part of Driveline's nationwide comprehensive road transport services, our select branch workshops can provide drivetrain modifications to match your chassis extension project or replace, repair, modify and balance anything from single to multi-piece driveshafts and PTOs.

- ▶ Chassis lengthening, shortening and overhang adjustments
- ▶ Tailshafts
- ▶ Diff relocation
- ▶ Engineering certification



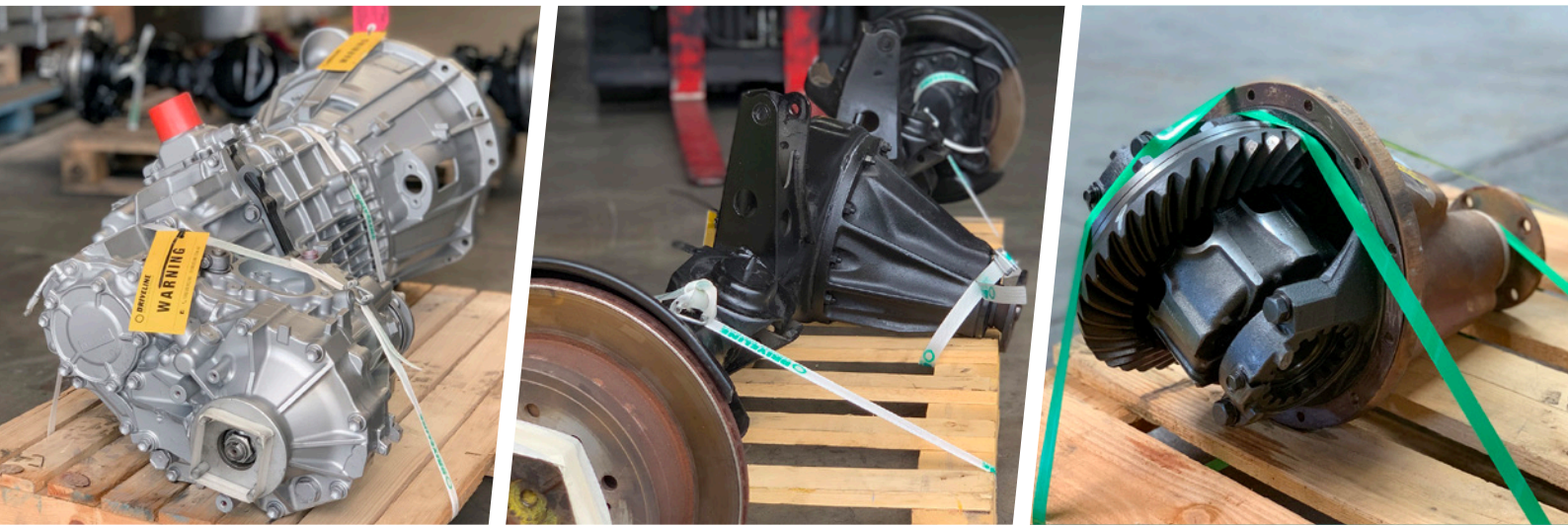
## Diff and Gearboxes

**A fundamental** part of our underbody and power transmission portfolio, Driveline's diff and gearbox division specialises in diff and gearbox products and services, rebuilds and four-wheel drive applications.

Through our advanced computerised and technical understanding of the complete power transmission process, Driveline's diff and gearbox specialists are experts at maximising torque and performance along the length of your driveline.







## Services and Parts

- ▶ Rebuilds and exchange assemblies
- ▶ 5th gear upgrades
- ▶ Matched performance kits
- ▶ Gear sets and spools
- ▶ Differentials
- ▶ 9" third member centre assemblies
- ▶ 4WD and performance diff balancing and straightening
- ▶ Rebuild kits and components
- ▶ Crack testing
- ▶ Workshop and fitment service





## Durashock Suspension

**Driveline's** suspension division specialises in aftermarket suspension for popular four-wheel drive vehicles. Our insight into suspension systems, and an understanding of the balance of a vehicle's driveline means we are uniquely equipped to provide first class suspension sales and technical advice to support our professional fitment and modification service for trade and retail customers.

- ▶ Improved control
- ▶ Dynamic handling
- ▶ Better, more comfortable ride on every surface
- ▶ Improved stability
- ▶ Tough twin-tube construction
- ▶ Precision engineered 18mm hardened chrome piston rods
- ▶ Heat resistant triple lip seals
- ▶ Enhanced on and off road performance
- ▶ Enhanced towing performance
- ▶ Three year / 60,000km warranty\*



\*For full Terms and Conditions see [driveline.com.au/termsandconditions](http://driveline.com.au/termsandconditions)





## Services and Parts

- ▶ Shock absorbers
- ▶ Coil springs
- ▶ Leaf springs
- ▶ Steering dampers
- ▶ Complete kits
- ▶ GVM upgrades
- ▶ U-bolts
- ▶ Bushes
- ▶ Shackles
- ▶ Standard and heavy duty options
- ▶ Pins





## Agricultural and Industrial Driveline

**Driveline** is a proud partner of driveshaft and power transmission solutions to both agricultural and industrial applications across Australia.

### Our markets include:

- ▶ Steel mills
- ▶ Paper mills
- ▶ Sugar trains
- ▶ Engine dynamometer shafts
- ▶ Quarries
- ▶ Coal handling and processing plants
- ▶ Exciters
- ▶ Stakers
- ▶ Crustiers

### Services and parts:

- ▶ Driveline design, modification and repair
- ▶ Dynamic balancing services
- ▶ Industrial shaft balancing
- ▶ Universal joints





## Defence, GSE, Marine, Material Handling and Port Operations

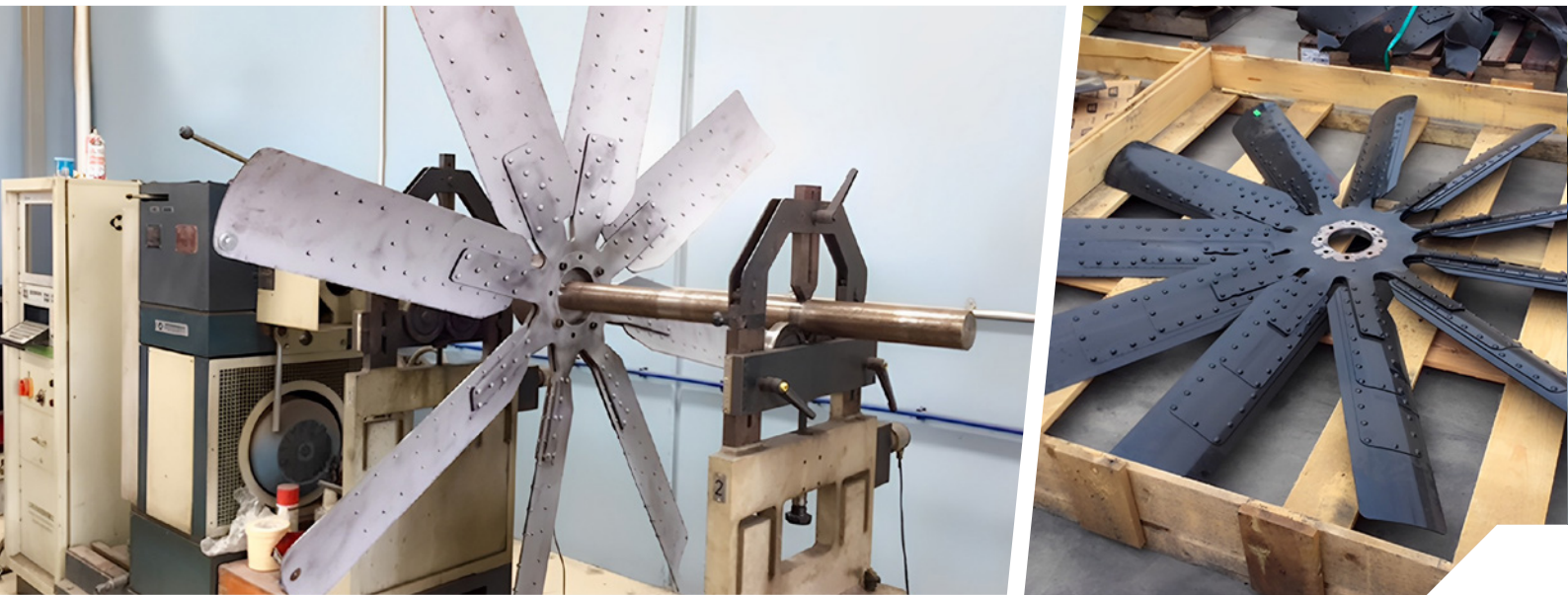
**Driveline's** engineering solutions and manufacturing capacity extends to parts, services and rebuilds for defence vehicles, ground support equipment, marine applications, material handling equipment and port operations.

### **Driveline's multi-disciplinary approach means solutions for:**

- ▶ Personnel carriers
- ▶ Light attack vehicles
- ▶ Tanks
- ▶ Airport tugs
- ▶ Pushback tractors
- ▶ Aircraft service vehicles

### **Services and parts:**

- |                 |                            |
|-----------------|----------------------------|
| ▶ Barges        | ▶ All-terrain cranes       |
| ▶ Tugs          | ▶ Telehandlers             |
| ▶ Dredges       | ▶ RoRo tractors            |
| ▶ Ferries       | ▶ Straddle carriers        |
| ▶ Yachts        | ▶ Empty container handlers |
| ▶ Mobile cranes | ▶ Reach stackers           |



## Industrial Balancing

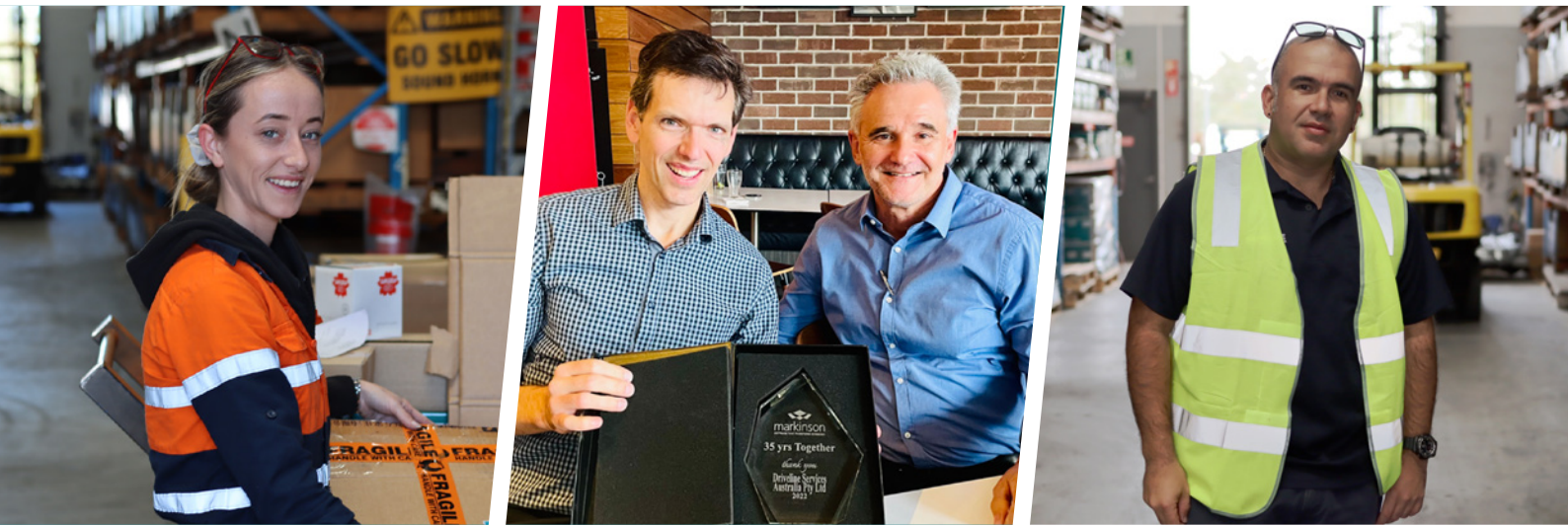
**Driveline's** dynamic industrial balancing service employs the latest state-of-the-art computer controlled balancers to optimise your equipment's performance by accurately identifying and correcting imperfections in large rotational components measuring up to three tonnes and with a maximum swing diameter of 2.1 metres.

Spinning up to 1250rpm, Driveline's industrial balancing service is ideal for oversized industrial equipment including heavy duty shafts, radiator fans, armatures, pump propellers and impellers, machine spindles, centrifuges, gyroscopes, rollers, wheel hubs, brake drums, beaters and turbine shafts.

### Services and parts:

- ▶ Up to 3t capacity
- ▶ Up to 2.1m of swing diameter
- ▶ 3.05 metre balancing bed
- ▶ Powerful 11KW engine
- ▶ Balances components up to 1250 rpm
- ▶ Accurate to within 12 rpm





## Corporate Responsibility

**At Driveline** we recognise that responsible, sustainable and ethical corporate performance is a critical component in the long term success of our business. We are committed to working with our customers, suppliers, staff and other stakeholders to achieve the most desirable outcomes for all.

### Our commitments:

- ✓ We are committed to addressing critical social, environmental and economic challenges to ensure the future of our business and of the society in which we operate.
- ✓ We are committed to continuing to discover new ways to overcome the challenges ahead and to remain at the forefront of innovation.
- ✓ We are committed to safety, transparency and integrity in all aspects of our operations.

► **BRISBANE SOUTH  
(HEAD OFFICE)**

56 Colebard Street East  
Acacia Ridge, Queensland 4110

**P:** +61 7 3275 7600

**E:** sales@driveline.com.au

► **BRISBANE NORTH**

6 Combarton Street  
Brendale,  
Queensland 4500

**P:** + 61 7 3889 7366

**E:** northside@driveline.com.au

► **TOWNSVILLE**

91-93 Crocodile Crescent  
Mount St John,  
Queensland 4818

**P:** +61 7 4774 2049

**E:** townsville@driveline.com.au

► **MACKAY**

13-15 Dozer Drive  
Paget,  
Queensland 4740

**P:** + 61 7 4952 4766

**E:** mackay@driveline.com.au

► **SYDNEY**

10 Reservoir Avenue  
Greenacre,  
New South Wales 2190

**P:** + 61 2 9790 7344

**E:** sydney@driveline.com.au

► **NEWCASTLE**

26 Enterprise Drive  
Beresfield,  
New South Wales 2322

**P:** + 61 2 4949 1500

**E:** newcastle@driveline.com.au

► **DUBBO**

92 Fitzroy Street  
Dubbo,  
New South Wales 2830

**P:** + 61 2 6882 0242

**E:** sales@dubbodiff.com.au

► **BROKEN HILL**

3/501 Chapple Street  
Broken Hill,  
New South Wales 2880

**P:** + 61 8 8010 7001

**E:** brokenhill@driveline.com.au

► **TASMANIA**

10 Hope Street  
Mowbray,  
Tasmania 7248

**P:** + 61 3 6326 5464

**E:** launceston@driveline.com.au

► **MELBOURNE**

4/15 Burgess Road  
Bayswater North,  
Victoria 3153

**P:** + 61 3 9761 6663

**E:** melbourne@driveline.com.au

► **NORTH MELBOURNE**

66 Gracie Street  
North Melbourne,  
Victoria 3051

**P:** +61 3 9928 9200

**E:** sales@udsv.com.au

► **PERTH**

19 Canvale Road,  
Canning Vale  
Western Australia 6155

**P:** +61 8 6350 8700

**E:** perth@driveline.com.au

Get in touch today.