

# ***DRIVELINE SERVICES***

AUSTRALIA PTY LTD

ABN 83 064 482 613

**Distributors of:**

**DRIVE**  
**PRO**™

**Quality Products**

© ***DRIVELINE SERVICES*** AUSTRALIA PTY LTD 2002

This catalogue is Copyright protected under the Copyright Act 1968 and any reproduction or distribution is strictly prohibited.

**Section : 5**

March 2005

*Whilst every care has been taken in compiling this catalogue, Driveline Services Australia P/L will not accept any responsibility for damages arising from incorrect or unsuitable parts being fitted to any vehicle. This catalogue has been produced as a guide to assist the buyer in the purchase of tube driveshaft replacement parts and we would appreciate advice on any of the information that appears to be incorrect in its application.*

# DRIVELINE SERVICES

AUSTRALIA PTY LTD

TUBE CATALOGUE

SECTION : 5

PAGE : i

## TABLE OF CONTENTS



## Section : 5 Tube

Table of Contents

Page i

Driveshaft Tube - Imperial

Page 1

- Page 3

Driveshaft Tube - Metric

Page 4

Tube Collars

Page 5



March 2005

© DRIVELINE SERVICES AUSTRALIA PTY LTD 2002

# DRIVELINE SERVICES

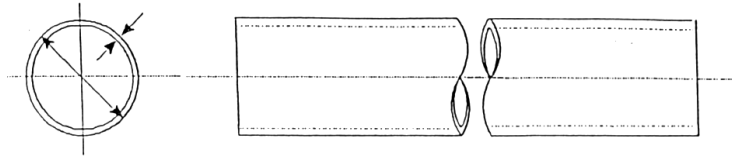
AUSTRALIA PTY LTD

TUBE CATALOGUE

SECTION : 5

PAGE : 1

## DRIVESHAFT TUBE - IMPERIAL



Outside Diameter	Wall Diameter	Part Number	Available Lengths	Notes / Suggestions
1.250 (31.8)	.095 (2.41)	<b>1.25X.095</b>	100mm, 2.7m	Maximum length 9 ft
1.250 (31.8)	.120 (3.05)	<b>1.25X.120</b>	100mm, 2.7m	Maximum length 9 ft
1.250 (31.8)	.188 (4.78)	<b>1.25X.188</b>	100mm, 2.7m	Maximum length 9 ft
1.500 (38.1)	.065 (1.65)	<b>1.50X.065</b>	100mm	
1.625 (41.3)	.065 (1.65)	<b>70.1625</b>	100mm	Maximum length 6 ft
1.750 (44.5)	.065 (1.65)	<b>1.75X.065</b>	100mm, 2.7m	Maximum length 9 ft
2.000 (50.8)	.065 (1.65)	<b>2X.065</b>	100mm, 2.7m, 5.7m	
2.000 (50.8)	.083 (2.11)	<b>2X.083</b>	100mm, 2.7m, 5.4m, 5.7m	
2.000 (50.8)	.095 (2.41)	<b>2X.095</b>	100mm, 2.7m, 4.5m	
2.000 (50.8)	.120 (3.05)	<b>2X.120</b>	100mm, 2.7m, 5.7m	
2.250 (57.2)	.120 (3.05)	<b>70.2250</b>	100mm	Maximum length 6 ft
2.250 (57.2)	.095 (2.41)	<b>2.25X.095</b>	100mm	
2.500 (63.5)	.065 (1.65)	<b>2.5X.065</b>	100mm, 2.7m, 3.0m, 5.7m	
2.500 (63.5)	.083 (2.11)	<b>2.5X.083</b>	100mm, 2.7m, 4.6m, 5.7m	
2.500 (63.5)	.095 (2.41)	<b>2.5X.095</b>	100mm, 2.7m, 4.4m	
2.500 (63.5)	.134 (3.40)	<b>2.5X.134</b>	100mm	
2.750 (69.9)	.065 (1.65)	<b>2.75X.065</b>	100mm, 2.7m, 4.0m, 5.7m	
2.750 (69.9)	.083 (2.11)	<b>2.75X.083</b>	100mm, 2.7m	Maximum length 9 ft
2.750 (69.9)	.109 (2.77)	<b>70.2750</b>	100mm	Maximum length 6 ft

March 2005

# DRIVELINE SERVICES

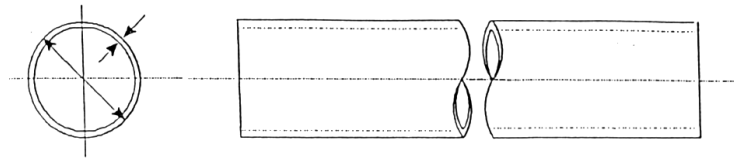
AUSTRALIA PTY LTD

TUBE CATALOGUE

SECTION : 5

PAGE : 2

## DRIVESHAFT TUBE - IMPERIAL



Outside Diameter	Wall Diameter	Part Number	Available Lengths	Notes / Suggestions
3.000 (76.2)	.065 (1.65)	<b>3X.065</b>	100mm, 4.3m, 4.9m, 5.7m	
3.000 (76.2)	.083 (2.11)	<b>3X.083</b>	100mm, 2.7m, 4.0m, 5.7m	
3.000 (76.2)	.095 (2.41)	<b>3X.095</b>	100mm, 2.7m, 4.5m, 5.7m	
3.000 (76.2)	.134 (3.40)	<b>3X.134</b>	100mm, 2.7m	
3.250 (82.6)	.065 (1.65)	<b>3.25X.065</b>	100mm, 2.7m, 4.0m, 5.7m	
3.500 (88.9)	.065 (1.65)	<b>3.5X.065</b>	100mm, 2.7m, 4.5m, 5.0m	
3.500 (88.9)	.083 (2.11)	<b>3.5X.083</b>	100mm, 2.7m, 4.9m, 5.7m	
3.500 (88.9)	.095 (2.41)	<b>3.5X.095</b>	100mm, 2.6m, 4.6m, 5.7m	
3.500 (88.9)	.134 (3.40)	<b>3.5X.134</b>	100mm, 2.7m, 4.2m, 4.7m	
4.000 (101.6)	.083 (2.11)	<b>4X.083</b>	100mm, 2.7m, 5.7m	
4.000 (101.6)	.134 (3.40)	<b>4X.134</b>	100mm, 2.7m, 4.0m, 5.7m	Use 4.09 x .180
4.090 (103.9)	.180 (4.57)	<b>4.09X.180</b>	100mm, 3.5m, 4.0m, 5.7m	
4.500 (114.3)	.095 (2.41)	<b>4.5X.095</b>	100mm, 2.7m	
4.500 (114.3)	.134 (3.40)	<b>4.5X.134</b>	100mm, 2.7m, 5.7m	Use 4.59 x .180
4.500 (114.3)	.259 (6.58)	<b>4.5X.259</b>	100mm, 2.7m, 4.1m, 4.2m	
4.590 (116.6)	.180 (4.57)	<b>4.59X.180</b>	100mm, 4.1m, 4.3m 4.7m	

March 2005

# DRIVELINE SERVICES

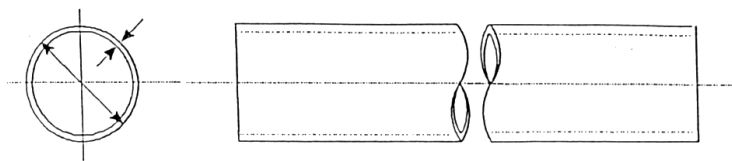
AUSTRALIA PTY LTD

TUBE CATALOGUE

SECTION : 5

PAGE : 3

## DRIVESHAFT TUBE - IMPERIAL



Outside Diameter	Wall Diameter	Part Number	Available Lengths	Notes / Suggestions
5.000 (127.0)	.250 (6.4)	<b>5X.250</b>	100mm, 2.7m	
5.000 (127.0)	.375 (9.53)	<b>5X.375</b>	100mm, 2.7m	
6.500 (165.1)	.375 (9.53)	<b>6.5X.375</b>	100mm, 2.7m	
6.500 (165.1)	.500 (12.7)	<b>6.5X.500</b>	100mm, 2.7m	

## DRIVESHAFT TUBE - ALUMINUM

Outside Diameter	Wall Diameter	Part Number	Available Lengths	Notes / Suggestions
3.500.125 (88.9)	.125 (3.18)	<b>AL3.5X.125</b>	100mm, 2.4m	
3.500.240 (88.9)	.240 (6.10)	<b>AL3.5X.240</b>	100mm	

## DRIVESHAFT TUBE - CHROME MOLY

Outside Diameter	Wall Diameter	Part Number	Available Lengths	Notes / Suggestions
2.000.083 (50.8)	.083 (2.11)	<b>CM2.0X.083</b>	100mm	
2.500.095 (63.5)	.095 (2.41)	<b>CM2.5X.095</b>	100mm	
3.000.083 (76.2)	.083 (2.11)	<b>CM3X.083</b>	100mm	

March 2005

# DRIVELINE SERVICES

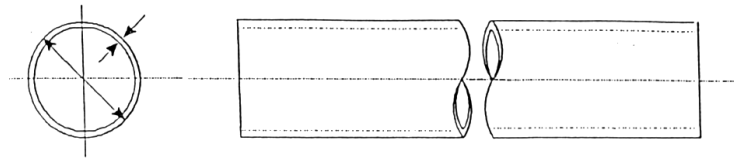
AUSTRALIA PTY LTD

TUBE CATALOGUE

SECTION : 5

PAGE : 4

## DRIVESHAFT TUBE - METRIC



Outside Dia (mm)	Wall Dia (mm)	Part Number	Available Lengths	Notes / Suggestions
50	3.3	<b>50X3.3</b>	100mm	
52	4.0	<b>52X4</b>	100mm	
60	4.0	<b>60X4</b>	100mm	
70	2.0	<b>70X2</b>	100mm	
70	3.0	<b>70X3</b>	100mm	
70	4.0	<b>70X4</b>	100mm	
80	4.0	<b>80X4</b>	100mm	
80	3.5	<b>80X3.5</b>	100mm	
85	5.0	<b>85X5</b>	100mm	
90	4.0	<b>90X4</b>	100mm	
90	5.0	<b>90X5</b>	100mm	
90	5.5	<b>90X5.5</b>	100mm	
100	5.0	<b>100X5</b>	100mm,	
100	6.0	<b>100X6</b>	100mm, 4.3m	
110	6.0	<b>110X6</b>	100mm	
112	7.0	<b>112X7</b>	100mm	
115	6.0	<b>115X6</b>	100mm	
120	4.0	<b>120X4</b>	100mm	
120	6.0	<b>120X6</b>	100mm	
130	5.0	<b>130X5</b>	100mm	
130	6.0	<b>130X6</b>	100mm	
140	5.0	<b>140X5</b>	100mm	
140	10.0	<b>140X10</b>	100mm	
143	7.5	<b>143X7.5</b>	100mm	
145	7.5	<b>145X7.5</b>	100mm	
184	9.5	<b>184X9.5</b>	100mm	

# DRIVELINE SERVICES

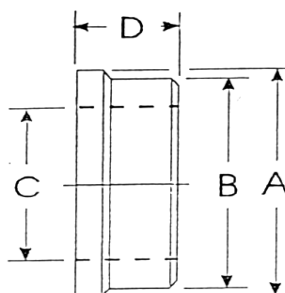
AUSTRALIA PTY LTD

TUBE CATALOGUE

SECTION : 5

PAGE : 5

## TUBE COLLARS



Outside Dia (A)	Tube Pilot (B)	Inside Dia (C)	Length (D)	Size Range		Part No.	Notes / Suggestions
				Min	Max		
1.25 (31.8)	1.02 (25.9)	.875 (22.1)	1.15 (29.2)	0.875 BAR (22.2)	1.25 x .120 (31.8 x 3.05)	<b>5332</b>	
1.75 (44.4)	1.63 (41.4)	.875 (22.1)	1.15 (29.2)	0.875 BAR (22.2)	1.75 x .065 (44.5 x 1.65)	<b>5344</b>	
2.98 (75.7)	2.87 (73.0)	1.77 (44.9)	1.08 (27.5)	2.0 x .120 (50.8 x 3.05)	3.0 x .065 (76.2 x 1.65)	<b>5357</b>	
(70.0)	(65.0)	(52.2)	(28.0)			<b>5367</b>	70mm x 3mm
2.50 (63.5)	2.310 (58.67)	1.834 (46.58)	.691 (17.55)	2.0 x .083 (50.8 x 2.11)	2.5 x .095 (63.5 x 2.41)	<b>5355</b>	
3.00 (76.2)	2.870 (72.90)	2.310 (58.67)	1.085 (27.56)	2.5 x .095 (63.5 x 2.41)	3.0 x .065 (76.2 x 1.65)	<b>5361</b>	
3.50 (88.9)	3.370 (85.60)	2.310 (58.67)	1.085 (27.56)	2.5 x .095 (63.5 x 2.41)	3.0 x .065 (76.2 x 1.65)	<b>5362</b>	
3.50 (88.9)	3.370 (85.60)	2.732 (69.39)	1.085 (27.56)	3.0 x .134 (76.2 x 3.40)	3.5 x .065 (88.9 x 1.65)	<b>5363</b>	
4.00 (101.6)	3.834 (85.60)	2.732 (69.39)	1.085 (27.56)	3.0 x .134 (76.2 x 3.40)	4.0 x .083 (101.6 x 2.11)	<b>5364</b>	
				3.5 x .156 (76.2 x 2.41)	4.0 x .083 (101.6 x 2.11)	<b>5365</b>	
				3.0 x .095 (76.2 x 2.41)	3.5 x .083 (88.9 x 2.11)	<b>5368</b>	
						<b>5370</b>	
						<b>5371</b>	
						<b>5372</b>	
				3.5 x .083 (76.2 x 2.11)	4.0 x .083 (101.6 x 2.11)	<b>5373</b>	
						<b>5375</b>	
						<b>5376</b>	

March 2005